

# PITTSBURGH CORNING CORPORATION LIGHTWISE® RESIDENTIAL SYSTEMS

## Wood Framed Hurricane-Resistant Glass Block Window



### INSTALLATION INSTRUCTIONS:

#### Materials Included:

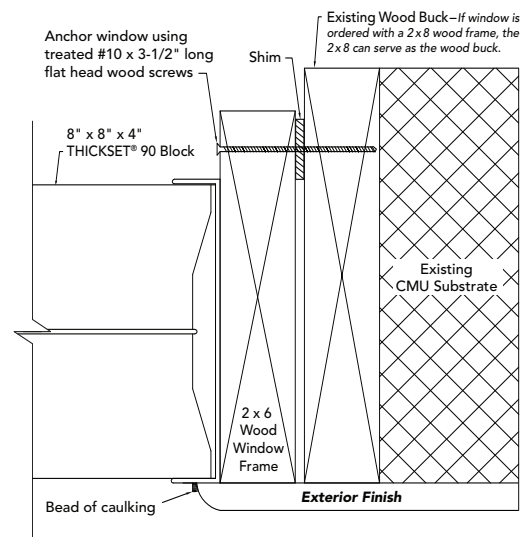
- One (1) Pittsburgh Corning Wood Framed Hurricane-Resistant Glass Block Window.

**Installation Instructions:** (Window installation standards, such as ASTM E2112 "Standard Practice for Installation of Exterior Windows, Doors and Skylights", should be followed, where applicable.)

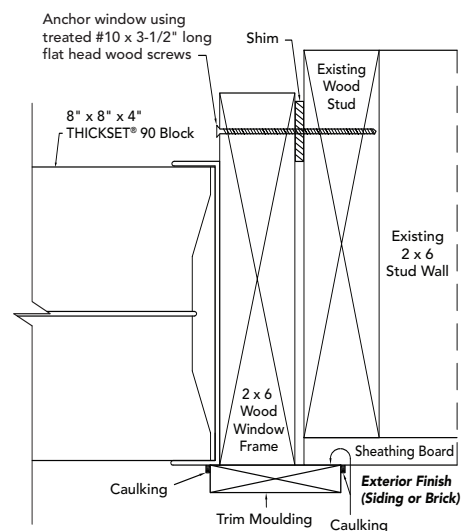
- Maintain window in an upright position during shipping, storage and while on site.
- Immediately before installation, carefully remove all protective wrapping and support lumber from window. **Caution: Remove only the support lumber not the window frame.**
- Lift or hoist window from the bottom. **Caution: Do not lift the window from the top as this could damage the window.**
- Place window into opening with flush side toward the exterior. Shim window level and plumb and secure shims. Window must be anchored from the interior side. Refer to the Rough Opening Chart for window opening dimensions.

**NOTE:** In masonry or concrete walls, the window openings must be fitted with wood bucks to accommodate anchorage of the window. Secure wood bucks into masonry or concrete using 3/16" x 1" embedment depth Hilti Kwik-Con II fasteners or equal, at 6" to 7" on center spacing. Countersink all fastener heads into wood buck frame. All rough opening dimensions apply to within wood buck framing.

- Anchor window using #10 x 3-1/2" long flat head treated wood screws. Spacing of the screws shall be as follows: Start within 1" from each corner and spaced no more than 7" on center (per each of four sides). Be sure to screw through all shims. Pre-drill all holes.
- All screws must be driven perpendicular to the frame.
- All screw heads should be flush or countersunk (optional) to the wood frame.
- Properly caulk and seal the window.
- Clean and maintain the glass block with any common household glass cleaner.



**CMU Wall Detail**



**Wood Framing Wall Detail**

