

# Shower, Tub, and Bathroom Wall System Installation

**Read this entire installation guide before beginning your project.**

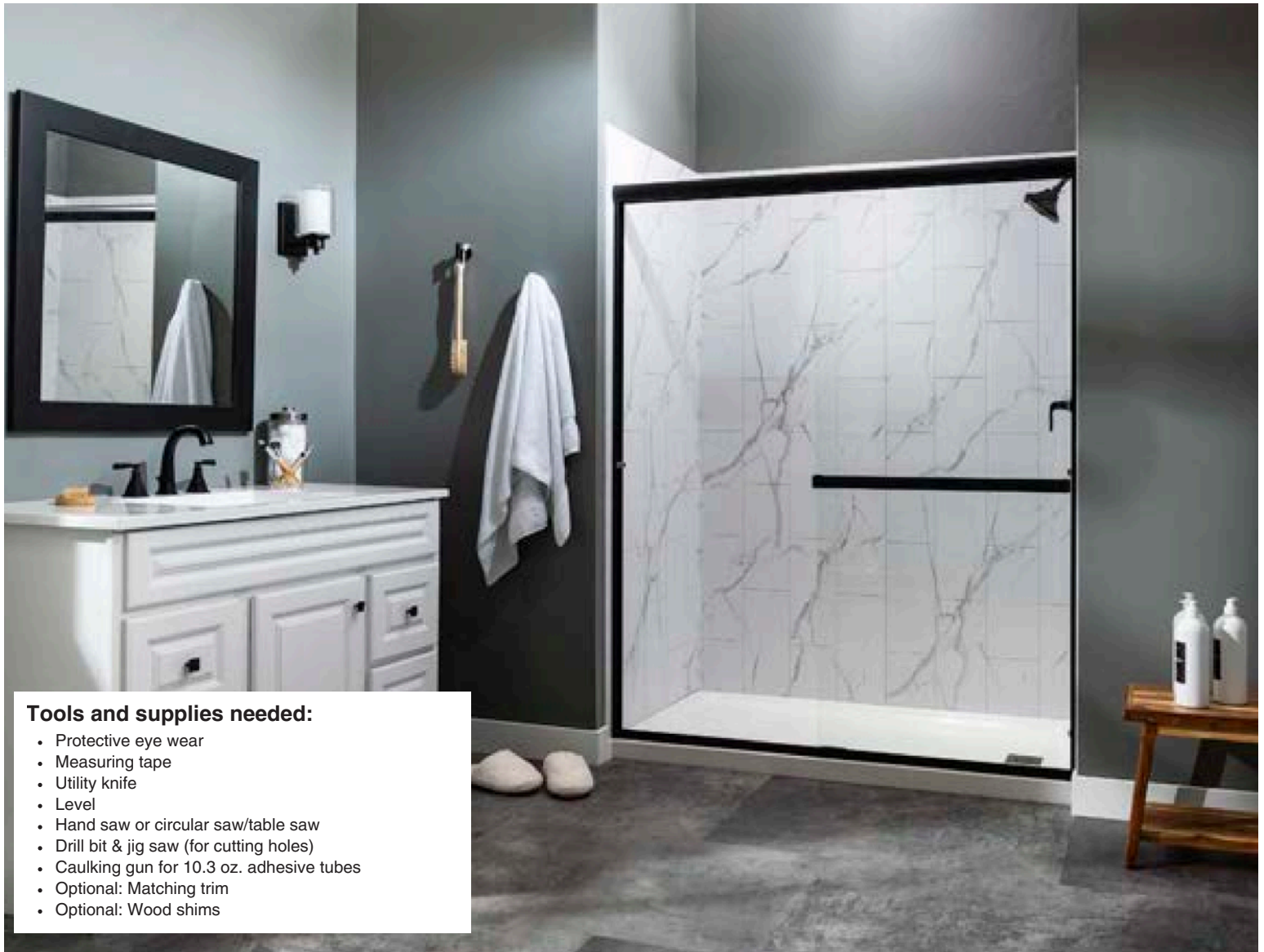
Innovate Building Solutions recommends you can install these panels over a substrate to ensure proper structural integrity. InnovaShowers Wall Panels are not intended to be installed onto raw concrete, poured concrete walls or concrete block basement walls. If you want to install onto these materials, a waterproof substrate is put behind the panels.

Store your InnovaShowers Panels flat if you're not immediately starting the installation.

## FOR SHOWER, TUB OR DIRECT WATER ENVIRONMENTS

InnovaShowers Wall Panels are 100% waterproof when properly sealed at the seams. In addition, you'll want to follow your local building codes for wet environments like shower and tub enclosures. In a tub or shower area, existing ceramic tile walls can be covered with no additional preparation.

Most shower, tub, or bathroom wall panel installations go over a substrate, such as Cement Board®, Schluter Kerdi Board®, GP Densheid®, Johns Manville Go Board®, Hardiebacker®, WPBK Triton®, Fiberock®, or a moisture resistant greenboard or equivalent products. Follow the installation instructions here to create a waterproof enclosure.



### Tools and supplies needed:

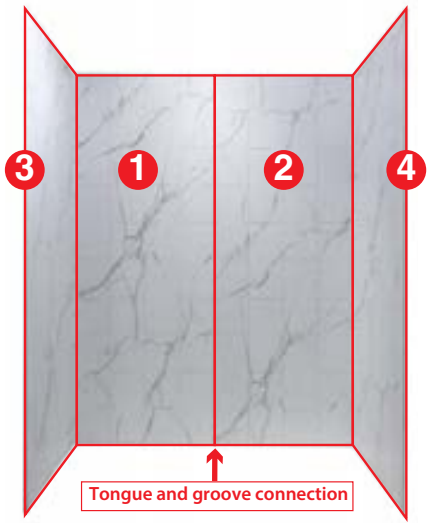
- Protective eye wear
- Measuring tape
- Utility knife
- Level
- Hand saw or circular saw/table saw
- Drill bit & jig saw (for cutting holes)
- Caulking gun for 10.3 oz. adhesive tubes
- Optional: Matching trim
- Optional: Wood shims

# STEP 1

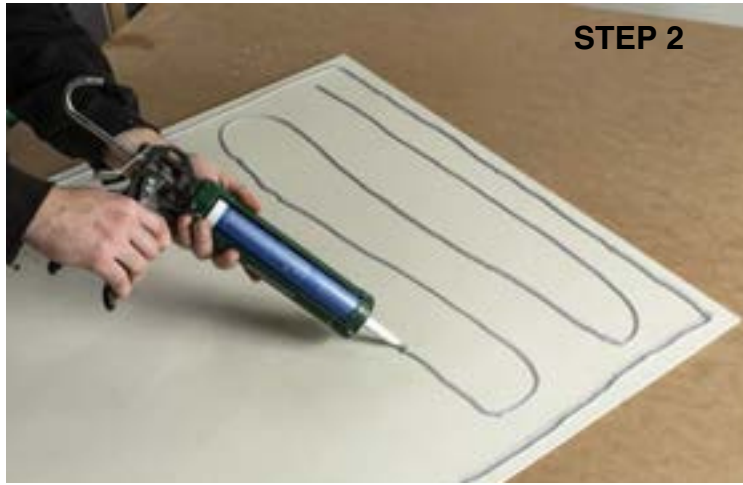
## Preparation for installation

Before starting, make sure all surfaces are clean, dry, smooth, and free from dust, grease, wax, etc. Wipe the back surface of the panels with a clean cloth to remove dust or debris. Perform a "dry layout" prior to applying adhesive. Measure walls, & check for level and square. Depending on dimensions and room construction, you may need to trim some panels accordingly.

*Note: Depending on the size of your shower you may use more (or less) panels than shown below.*

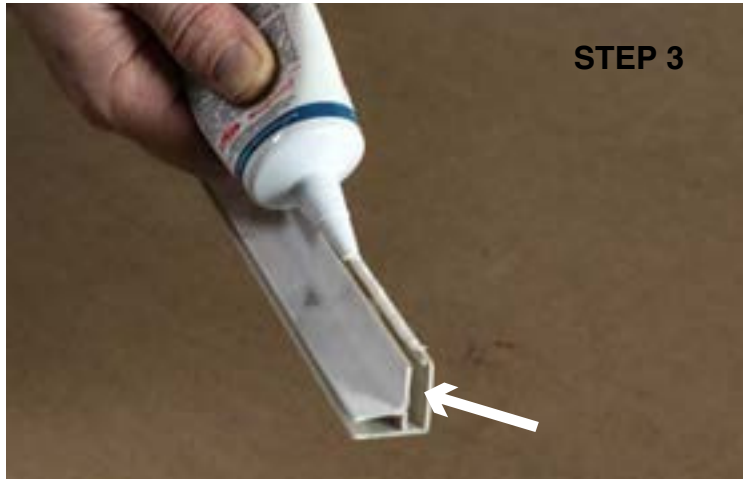


Install the back wall panels first, from left to right (1 & 2). Next, install the side wall panels (3 & 4). Note, panels 1 & 2 will connect with a tongue and groove, so dry fit them ahead of your install to test the connection.



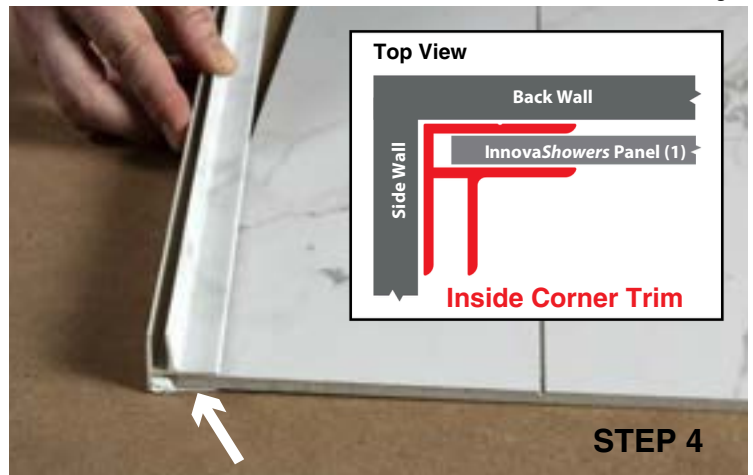
### STEP 2

Apply adhesive (supplied with your kit) to the back of the first panel. Using recommended adhesive only, apply a 1/8" bead around the perimeter of the panel, about 1" in from the edge. Then, apply rows of adhesive every 4-6" apart in a typical "S" pattern.



### STEP 3

Insert sealant from end to end into the deeper channel of the first inside corner trim. Panel 1 will be inserted into this channel.



### STEP 4

Slide the inside corner trim onto panel 1.



### STEP 5

With the inside corner trim facing the left corner, and after applying adhesive to back of panel 1, press the panel onto the back wall. Make sure it is tight into the corner.



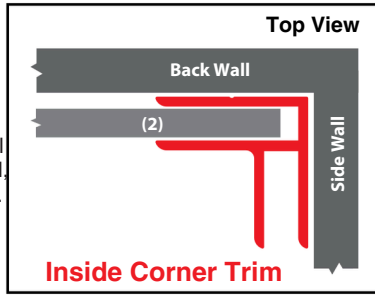
### STEP 6

Before installing panel 2, be sure to put a bead of sealant (which is provided with your kit) along the tongue and groove edge of panel 1.

### STEP 7

Like with panel 1, apply adhesive to the back of panel 2.

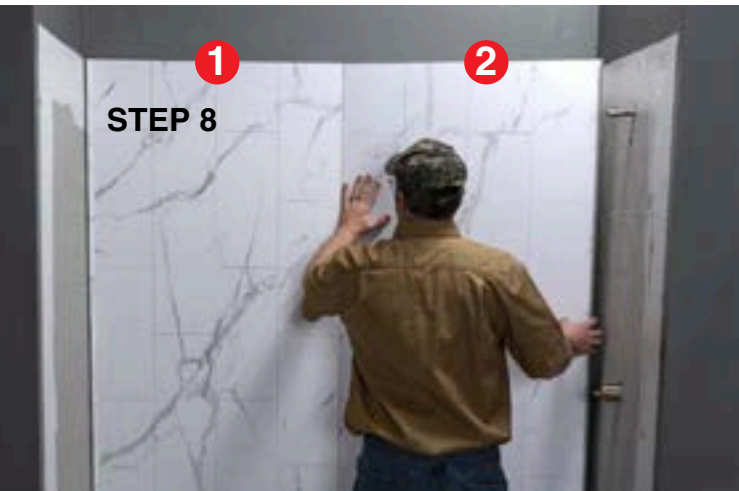
Insert sealant into the second inside corner trim from end to end. Slide Panel 2 inside corner trim. Like panel 1, make sure it is the deeper channel, as that is the one panel 2 will go into.



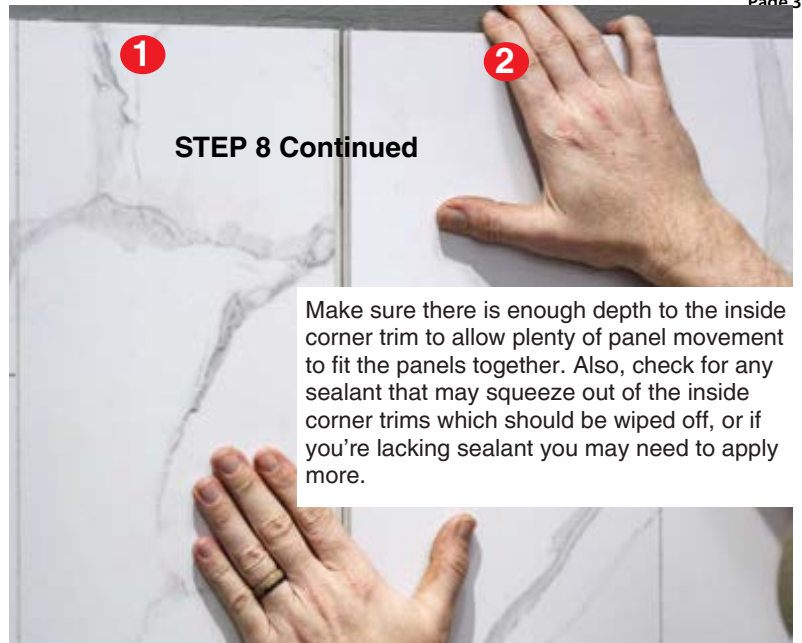
With the inside corner trim facing the right corner, press panel 2 onto the back wall. Make sure the corner trim and panel is tight in the corner.



Detail showing the tongue and groove connection.



Slide the panel to the left so the tongue and groove of the panel edges click together. Wipe off any sealant that squeezes out or add more if needed.



Make sure there is enough depth to the inside corner trim to allow plenty of panel movement to fit the panels together. Also, check for any sealant that may squeeze out of the inside corner trims which should be wiped off, or if you're lacking sealant you may need to apply more.

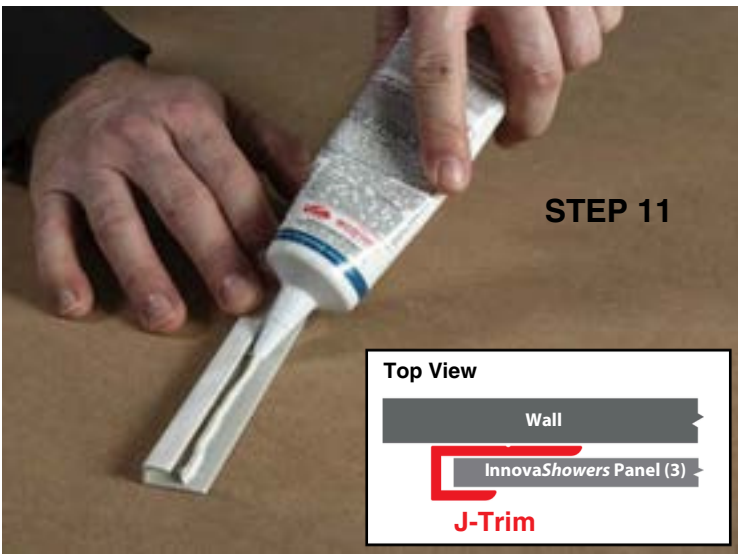


If your side wall panel(s) are 36" or less in width, you'll need to trim both edges of the tongue and groove panel before inserting your side panels (#3 and #4) into the inside corner trims and adding the 'J-trims' on the outside edges of panel #3 and #4 (see the illustration in Step 11).

If your side wall panel(s) are larger than 36", you'll need to trim one side of the tongue and groove panel which will be inserted into its corresponding inside corner trim. However, you'll also need to keep one side of the tongue and groove intact as it'll be the connection to join your 'side panels' (which, in this case are walls wider than 36"). Then apply sealant (like in Step 6) where the click lock side panels are joined together.



Apply sealant into the other side of the inside corner trim that is already installed. Then apply adhesive to the back of panel 3 and affix to left wall and make sure it is inserted into the inside corner trim.

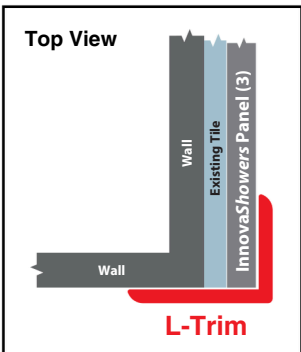


Apply adhesive into J-trim piece which will go on the outside edge of Panel (3) as shown above.



Install the J-trim to cover the outside edge of panel 3.

### L-Trim Option (For thicker backer materials or external corners)



Note: If applying your shower or tub wall system over an existing thicker substrate such as tile, you will need to use a wider L-trim which will better accommodate the thicker dimension of the wall.

Note: J-Trims are routinely provided with InnovaShowers Kits, but L-Trim can be added or substituted in a kit. In addition, L-Trim profiles are used to finish 90 degree corners.



Cut panels to accommodate shower components, like your shower head and/or valve. Measure and mark the locations and use one drill or hole saw.

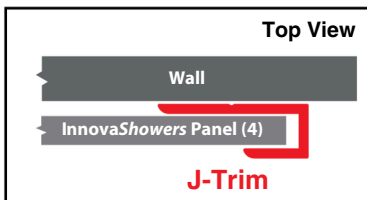


Apply sealant into the other side of the inside corner trim that is already installed. Then apply adhesive to the back of panel 4 and affix to right wall, making sure it is inserted into the inside corner trim for your plumbing wall



Make sure your panel is fitting nicely to the plumbing wall.

Insert sealant into the second J-trim from end to end.



Install the J-trim to cover the outside edge of panel 4.



Completed shower wall system.

For more information, or to get answers to Frequently Asked Questions (FAQs) about InnovaShowers Wall Panel Systems, visit: [www.InnovaShowers.com](http://www.InnovaShowers.com)



Apply sealant to top edges of all the panels for a watertight seal.



Smooth the sealant across the panels for adequate coverage.

SCAN HERE FOR AN INSTALLATION VIDEO



[www.InnovaShowers.com](http://www.InnovaShowers.com) | 1-877-668-5888